

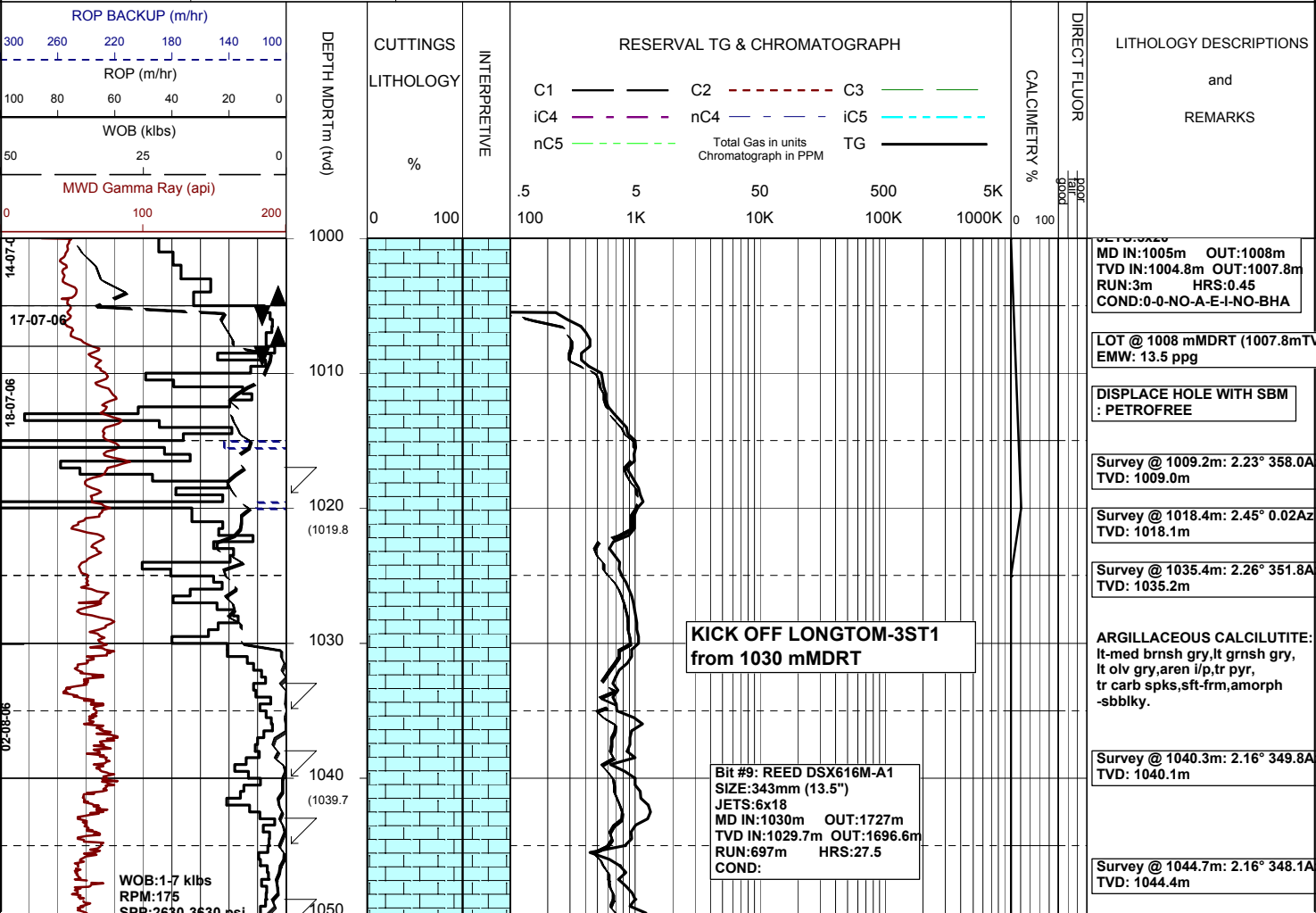


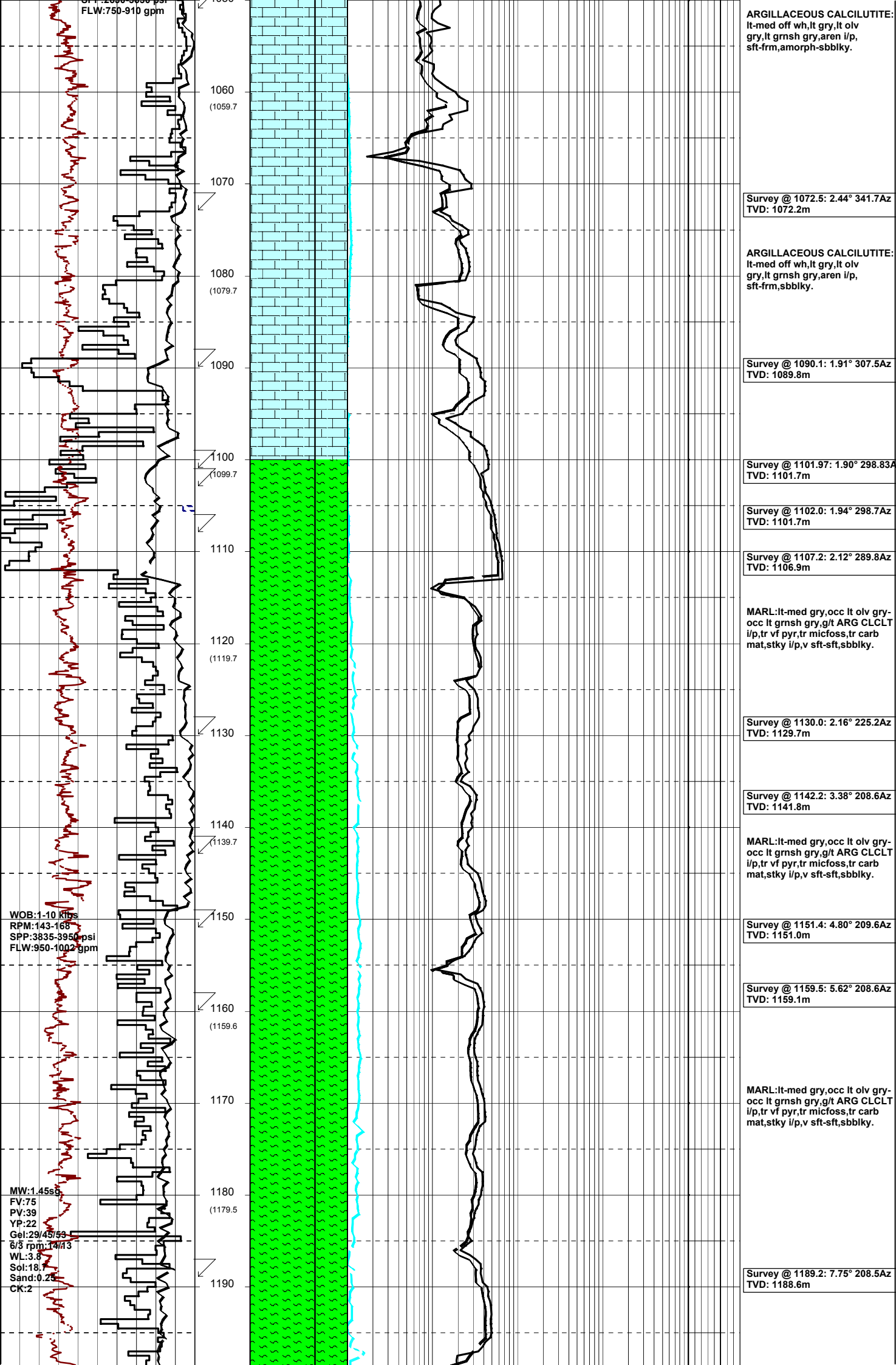
# MASTERLOG LONGTOM-3ST1



GENERAL	POSITION	HOLE / CASING INFO	DATE / DEPTH	ENGINEERS
Country : AUSTRALIA	Latitude : 38°05'34.63"S	914mm(36") hole to: 111.8m	Spud Date : 02-08-2006	T. N. KYAW
Permit : VIC/P54	Longitude : 148°18'41.52"E	559mm(22") hole to: 1005m	Total Depth Date : XX-XX-2006	A. DUNN
Field : LONGTOM	UTM Co-ord X (m E): 615006	241mm(9 1/2") hole to: m	Total Depth (mMDRT): m	D. ADDERLEY
Basin : GIPPSLAND	UTM Co-ord Y (m N): 5783059.3	762mm(30") Cond. to: 110.8m	True Vertical Depth (mTVDSS): m	
Well Type : APPRAISAL	RT to LAT (m): 21.5	406mm(16") Csg. to: 995.32m	Log Scale : 1/ 500	
Rig: OCEAN PATRIOT	RT to Sea Bed (m): 78.2		Final Status : ??	

ABBREVIATIONS	LITHOLOGY LEGEND	ENGINEERING LEGEND																																																								
<table style="width: 100%;"> <tr><td>MW Mud Weight</td><td>WOB Weight on Bit (klbs)</td></tr> <tr><td>FV Funnel Viscosity</td><td>RPM Rotations Per Min</td></tr> <tr><td>PV Plastic Viscosity</td><td>FLW Flow Rate (gpm)</td></tr> <tr><td>YP Yield Point</td><td>SPP Pump Pressure (psi)</td></tr> <tr><td>Gel Gel Strength</td><td>RR Re-Run Bit</td></tr> <tr><td>WL Water Loss</td><td>TG Trip Gas</td></tr> <tr><td>KCl Potassium Chloride</td><td>CG Connection Gas</td></tr> <tr><td>Cl Chlorides</td><td>BG Background Gas</td></tr> <tr><td>Incl Inclination</td><td>DGP Drilled Gas Peak</td></tr> <tr><td>Az Azimuth</td><td>MM Mud Motor</td></tr> </table>	MW Mud Weight	WOB Weight on Bit (klbs)	FV Funnel Viscosity	RPM Rotations Per Min	PV Plastic Viscosity	FLW Flow Rate (gpm)	YP Yield Point	SPP Pump Pressure (psi)	Gel Gel Strength	RR Re-Run Bit	WL Water Loss	TG Trip Gas	KCl Potassium Chloride	CG Connection Gas	Cl Chlorides	BG Background Gas	Incl Inclination	DGP Drilled Gas Peak	Az Azimuth	MM Mud Motor	<table style="width: 100%;"> <tr><td> Claystone</td><td> Marl</td><td> Lithic Fragment</td><td> Cement</td></tr> <tr><td> Siltstone</td><td> Clay, Limestone</td><td> Foraminifera</td><td> Glauconite</td></tr> <tr><td> Shale</td><td> Limestone</td><td> Fossils</td><td> Pyrite</td></tr> <tr><td> Fine SST</td><td> Dolomite</td><td> Bryozoa</td><td> Iron Minerals</td></tr> <tr><td> Medium SST</td><td> Coal</td><td> Sponges</td><td> Mica</td></tr> <tr><td> Coarse SST</td><td> Volcanic</td><td> Brachiopoda</td><td> Siderite</td></tr> </table>	Claystone	Marl	Lithic Fragment	Cement	Siltstone	Clay, Limestone	Foraminifera	Glauconite	Shale	Limestone	Fossils	Pyrite	Fine SST	Dolomite	Bryozoa	Iron Minerals	Medium SST	Coal	Sponges	Mica	Coarse SST	Volcanic	Brachiopoda	Siderite	<table style="width: 100%;"> <tr><td> Shoe</td><td> DOLOMITE</td></tr> <tr><td> Deviation survey</td><td> FIT</td></tr> <tr><td> DST</td><td> Mud loss</td></tr> <tr><td> TEST</td><td> Mud gain</td></tr> <tr><td> Sidewall Core</td><td></td></tr> <tr><td> Core</td><td></td></tr> </table>	Shoe	DOLOMITE	Deviation survey	FIT	DST	Mud loss	TEST	Mud gain	Sidewall Core		Core	
MW Mud Weight	WOB Weight on Bit (klbs)																																																									
FV Funnel Viscosity	RPM Rotations Per Min																																																									
PV Plastic Viscosity	FLW Flow Rate (gpm)																																																									
YP Yield Point	SPP Pump Pressure (psi)																																																									
Gel Gel Strength	RR Re-Run Bit																																																									
WL Water Loss	TG Trip Gas																																																									
KCl Potassium Chloride	CG Connection Gas																																																									
Cl Chlorides	BG Background Gas																																																									
Incl Inclination	DGP Drilled Gas Peak																																																									
Az Azimuth	MM Mud Motor																																																									
Claystone	Marl	Lithic Fragment	Cement																																																							
Siltstone	Clay, Limestone	Foraminifera	Glauconite																																																							
Shale	Limestone	Fossils	Pyrite																																																							
Fine SST	Dolomite	Bryozoa	Iron Minerals																																																							
Medium SST	Coal	Sponges	Mica																																																							
Coarse SST	Volcanic	Brachiopoda	Siderite																																																							
Shoe	DOLOMITE																																																									
Deviation survey	FIT																																																									
DST	Mud loss																																																									
TEST	Mud gain																																																									
Sidewall Core																																																										
Core																																																										





FLW:750-910 gpm

1050  
1060 (1059.7)  
1070  
1080 (1079.7)  
1090  
1100 (1099.7)  
1110  
1120 (1119.7)  
1130  
1140 (1139.7)  
1150  
1160 (1159.6)  
1170  
1180 (1179.5)  
1190

ARGILLACEOUS CALCILUTITE:  
lt-med off wh,lt gry,lt olv  
gry,lt grnsh gry,aren i/p,  
sft frm,amorph-sbbkly.

Survey @ 1072.5: 2.44° 341.7Az  
TVD: 1072.2m

ARGILLACEOUS CALCILUTITE:  
lt-med off wh,lt gry,lt olv  
gry,lt grnsh gry,aren i/p,  
sft frm,sbbkly.

Survey @ 1090.1: 1.91° 307.5Az  
TVD: 1089.8m

Survey @ 1101.97: 1.90° 298.83Az  
TVD: 1101.7m

Survey @ 1102.0: 1.94° 298.7Az  
TVD: 1101.7m

Survey @ 1107.2: 2.12° 289.8Az  
TVD: 1106.9m

MARL:lt-med gry,occ lt olv gry-  
occ lt grnsh gry,g/t ARG CLCLT  
i/p,tr vf pyr,tr micfoss,tr carb  
mat,stkly i/p,v sft-sft,sbbkly.

Survey @ 1130.0: 2.16° 225.2Az  
TVD: 1129.7m

Survey @ 1142.2: 3.38° 208.6Az  
TVD: 1141.8m

MARL:lt-med gry,occ lt olv gry-  
occ lt grnsh gry,g/t ARG CLCLT  
i/p,tr vf pyr,tr micfoss,tr carb  
mat,stkly i/p,v sft-sft,sbbkly.

Survey @ 1151.4: 4.80° 209.6Az  
TVD: 1151.0m

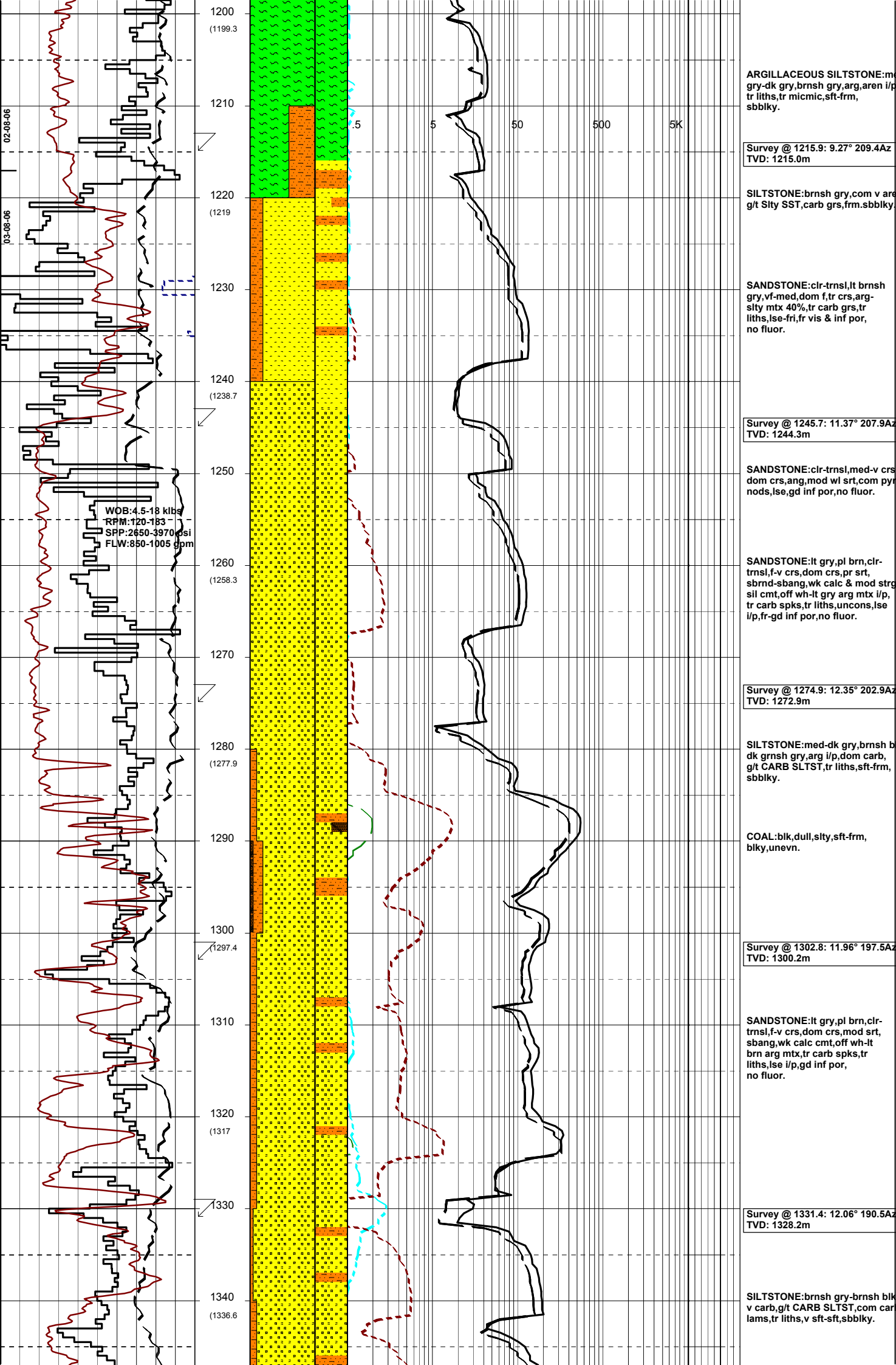
Survey @ 1159.5: 5.62° 208.6Az  
TVD: 1159.1m

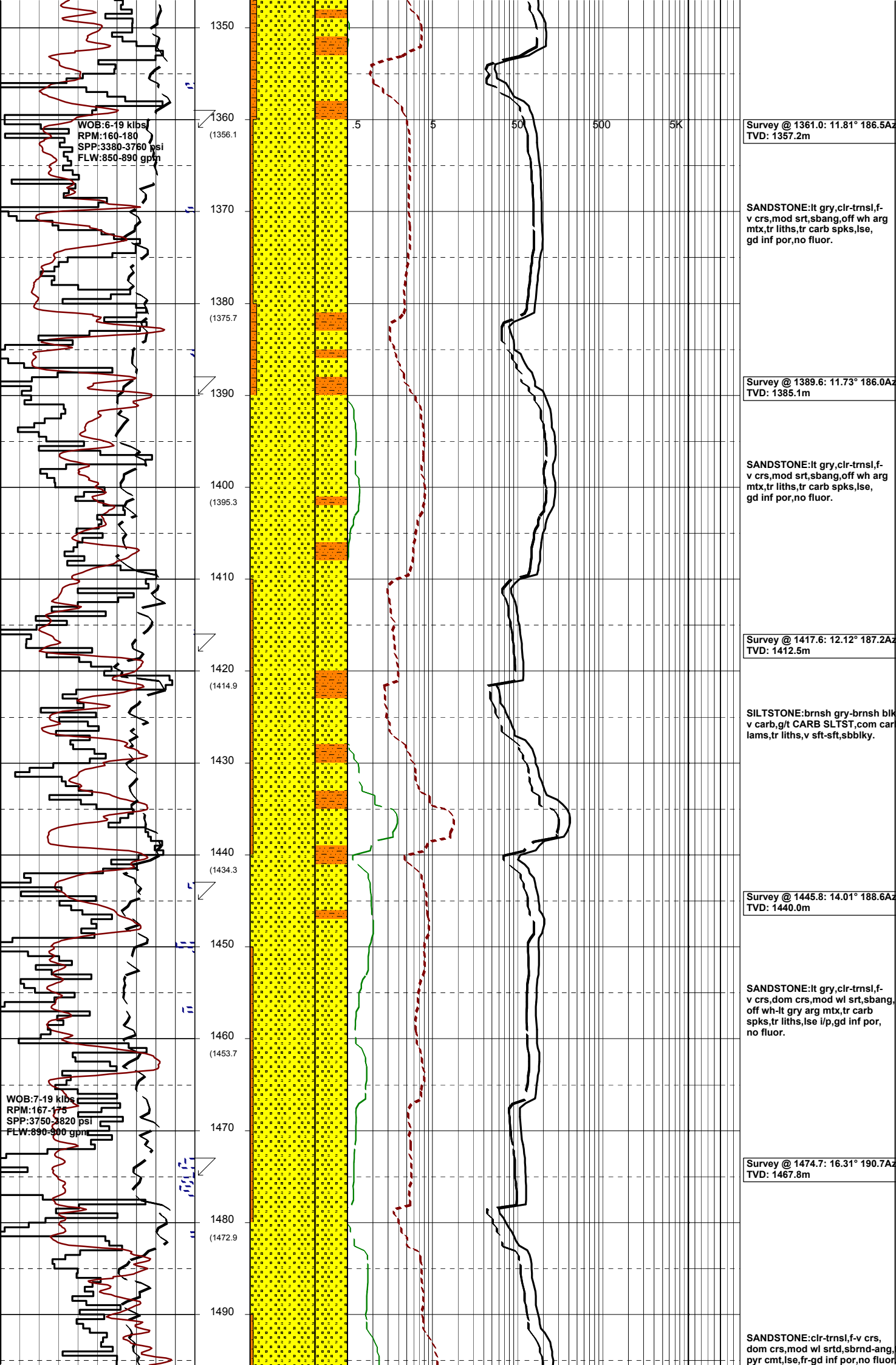
MARL:lt-med gry,occ lt olv gry-  
occ lt grnsh gry,g/t ARG CLCLT  
i/p,tr vf pyr,tr micfoss,sbbkly.

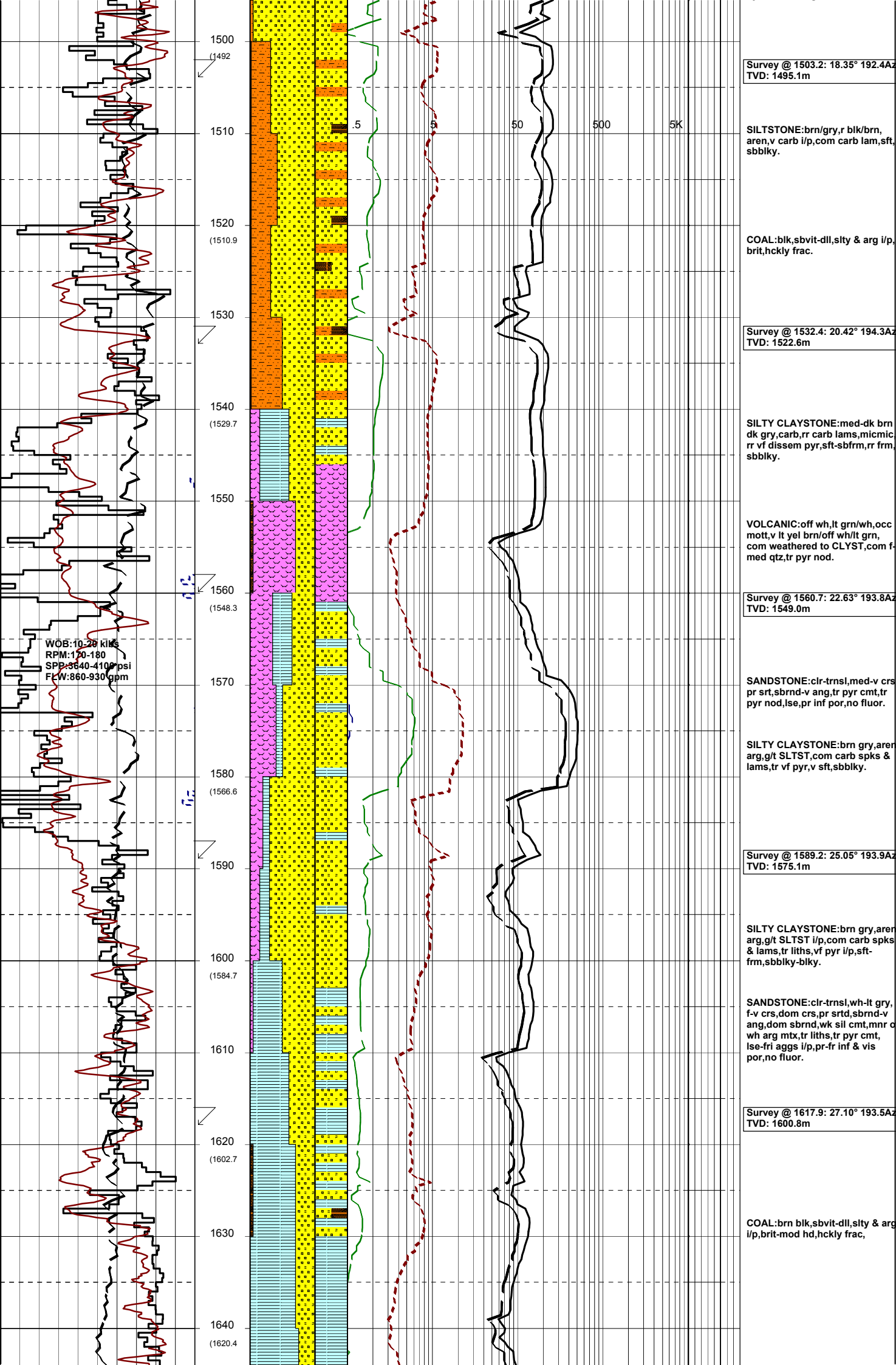
Survey @ 1189.2: 7.75° 208.5Az  
TVD: 1188.6m

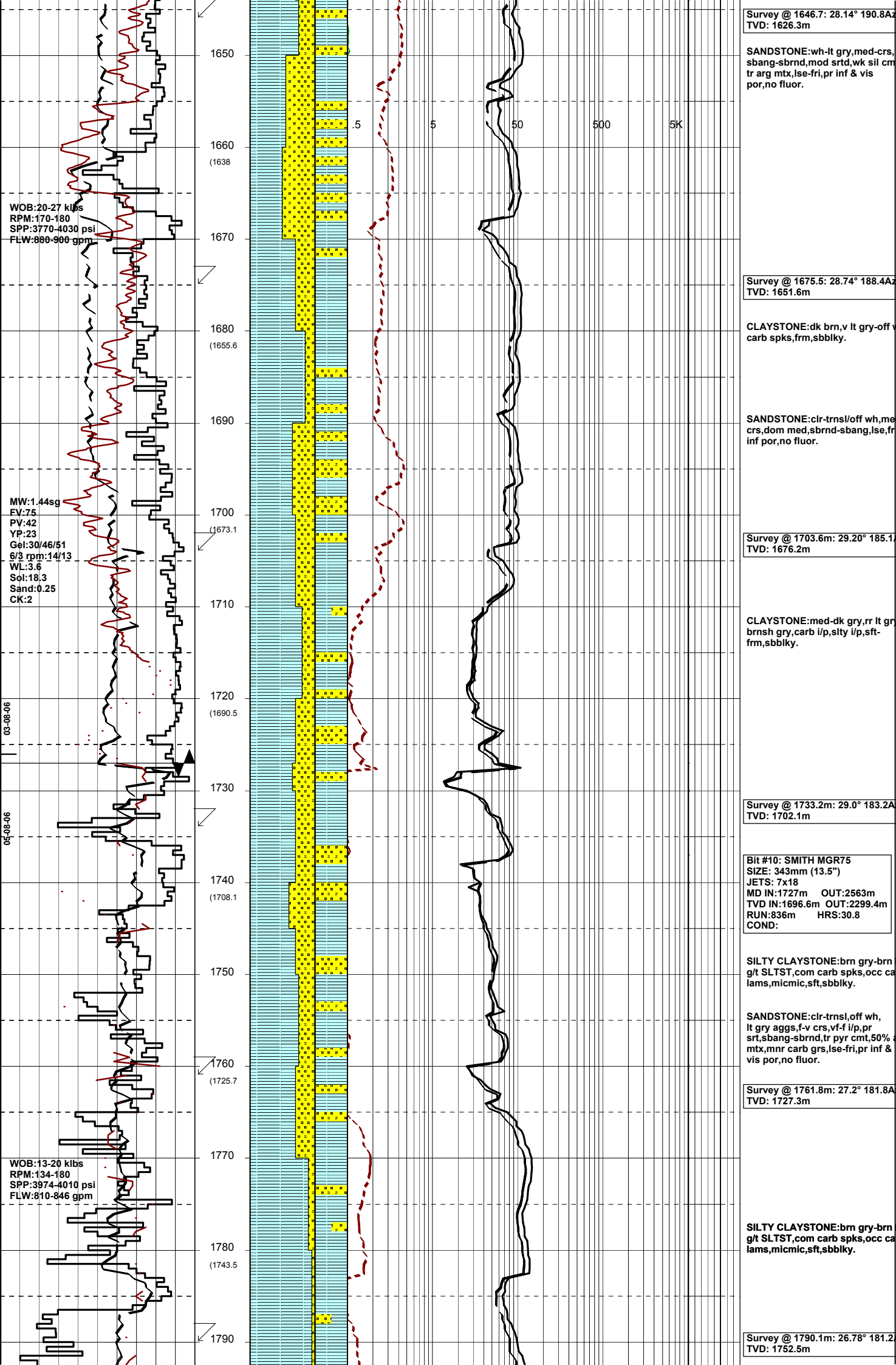
WOB:1-10 Rps  
RPM:143-165  
SPP:3835-3950 psi  
FLW:950-1002 gpm

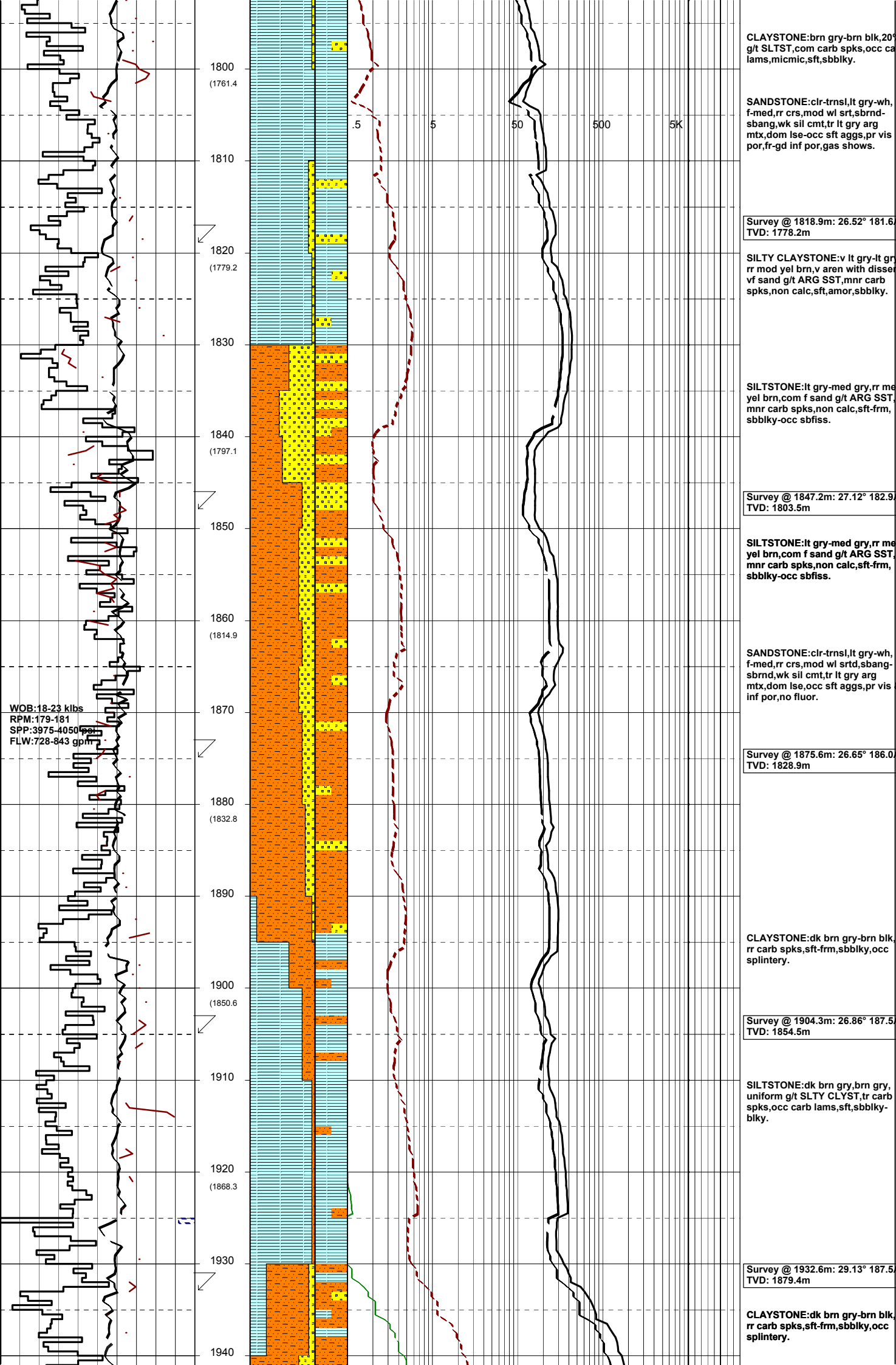
MW:1.45sc  
FV:75  
PV:39  
YP:22  
Gel:29/45/53  
6/3 rpm:14/13  
WL:3.8  
Sol:18.7  
Sand:0.22  
CK:2

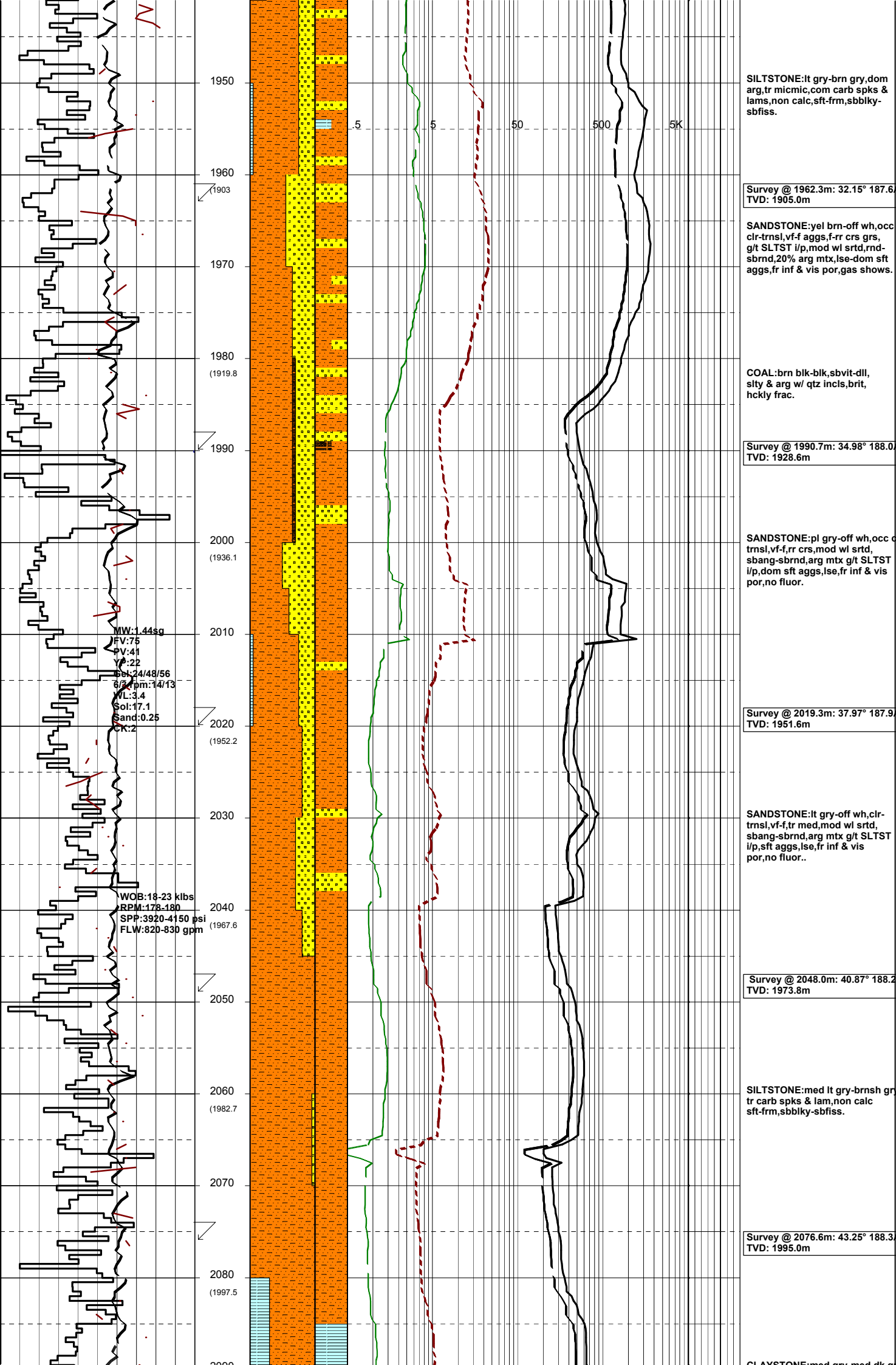












SILTSTONE:lt gry-brn gry,dom arg,tr micmic,com carb spks & lams,non calc,sft-frm,sbbiky-sbfiss.

Survey @ 1962.3m: 32.15° 187.6  
TVD: 1905.0m

SANDSTONE:yel brn-off wh,occ clr-trnsl,vf-f aggs,f-rr crs grs, g/t SLTST i/p,mod wl srtd,rnd-sbrnd,20% arg mtx,lse-dom sft aggs,fr inf & vis por,gas shows.

COAL:brn blk-blk,sbvit-dll, slty & arg w/ qtz inclc,brit, hckly frac.

Survey @ 1990.7m: 34.98° 188.0  
TVD: 1928.6m

SANDSTONE:pl gry-off wh,occ trnsl,vf-f,rr crs,mod wl srtd, sbang-sbrnd,arg mtx g/t SLTST i/p,dom sft aggs,lse,fr inf & vis por,no fluor.

MW:1.44sq  
FV:75  
PV:41  
P:22  
Sep:24/48/56  
6/3 rpm:14/13  
WL:3.4  
Sol:17.1  
Sand:0.25  
CK:2

Survey @ 2019.3m: 37.97° 187.9  
TVD: 1951.6m

SANDSTONE:lt gry-off wh,clr-trnsl,vf-f,tr med,mod wl srtd, sbang-sbrnd,arg mtx g/t SLTST i/p,sft aggs,lse,fr inf & vis por,no fluor..

WOB:18-23 klbs  
RPM:178-180  
SPP:3920-4150 psi  
FLW:820-830 gpm

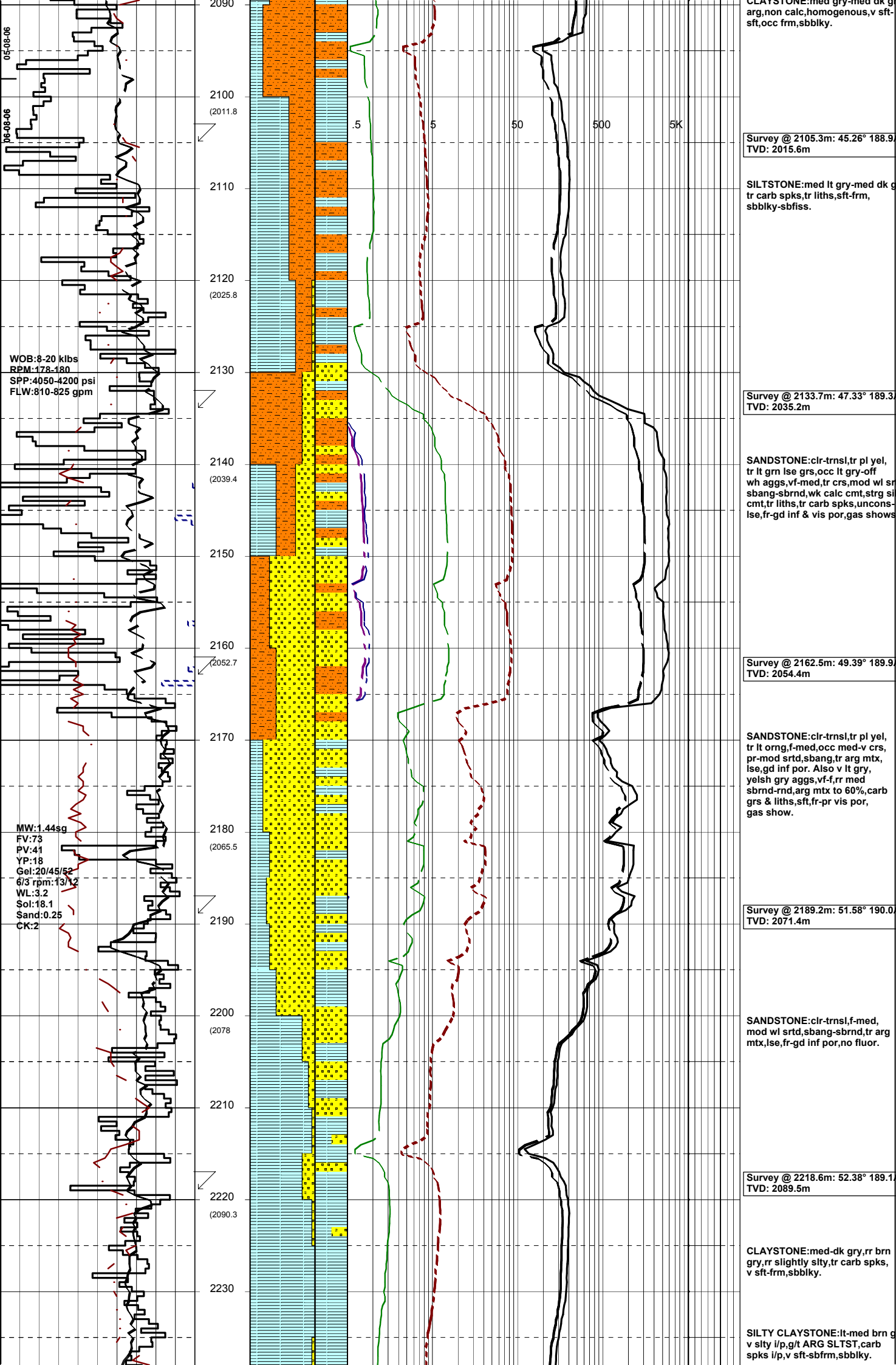
Survey @ 2048.0m: 40.87° 188.2  
TVD: 1973.8m

SILTSTONE:med lt gry-brnsh gr tr carb spks & lam,non calc sft-frm,sbbiky-sbfiss.

Survey @ 2076.6m: 43.25° 188.3  
TVD: 1995.0m

CLAYSTONE:med gry,mod dk





05-08-06  
06-08-06

2090  
2100 (2011.8)  
2110  
2120 (2025.8)  
2130  
2140 (2039.4)  
2150  
2160 (2052.7)  
2170  
2180 (2065.5)  
2190  
2200 (2078)  
2210  
2220 (2090.3)  
2230

WOB: 8-20 klbs  
RPM: 178-180  
SPP: 4050-4200 psi  
FLW: 810-825 gpm

MW: 1.44sg  
FV: 73  
PV: 41  
YP: 18  
Gel: 20/45/52  
6/3 rpm: 13/12  
WL: 3.2  
Sol: 18.1  
Sand: 0.25  
CK: 2

.5      5      50      500      5K

Survey @ 2105.3m: 45.26° 188.9°  
TVD: 2015.6m

SILTSTONE: med lt gry-med dk gry  
arg, non calc, homogenous, v sft-  
sft, occ frm, sbbkly.

Survey @ 2133.7m: 47.33° 189.3°  
TVD: 2035.2m

SANDSTONE: clr-trnsl, tr pl yel,  
tr lt gm lse grs, occ lt gry-off  
wh aggs, vf-med, tr crs, mod wl sr  
sbrng-sbrnd, wk calc cmt, strg sil  
cmt, tr liths, tr carb spks, uncon-  
lse, fr-gd inf & vis por, gas shows

Survey @ 2162.5m: 49.39° 189.9°  
TVD: 2054.4m

SANDSTONE: clr-trnsl, tr pl yel,  
tr lt org, f-med, occ med-v crs,  
pr-mod srted, sbrng, tr arg mtx,  
lse, gd inf por. Also v lt gry,  
yelsh gry aggs, vf-f, rr med  
sbrnd-rnd, arg mtx to 60%, carb  
grs & liths, sft, fr-pr vis por,  
gas show.

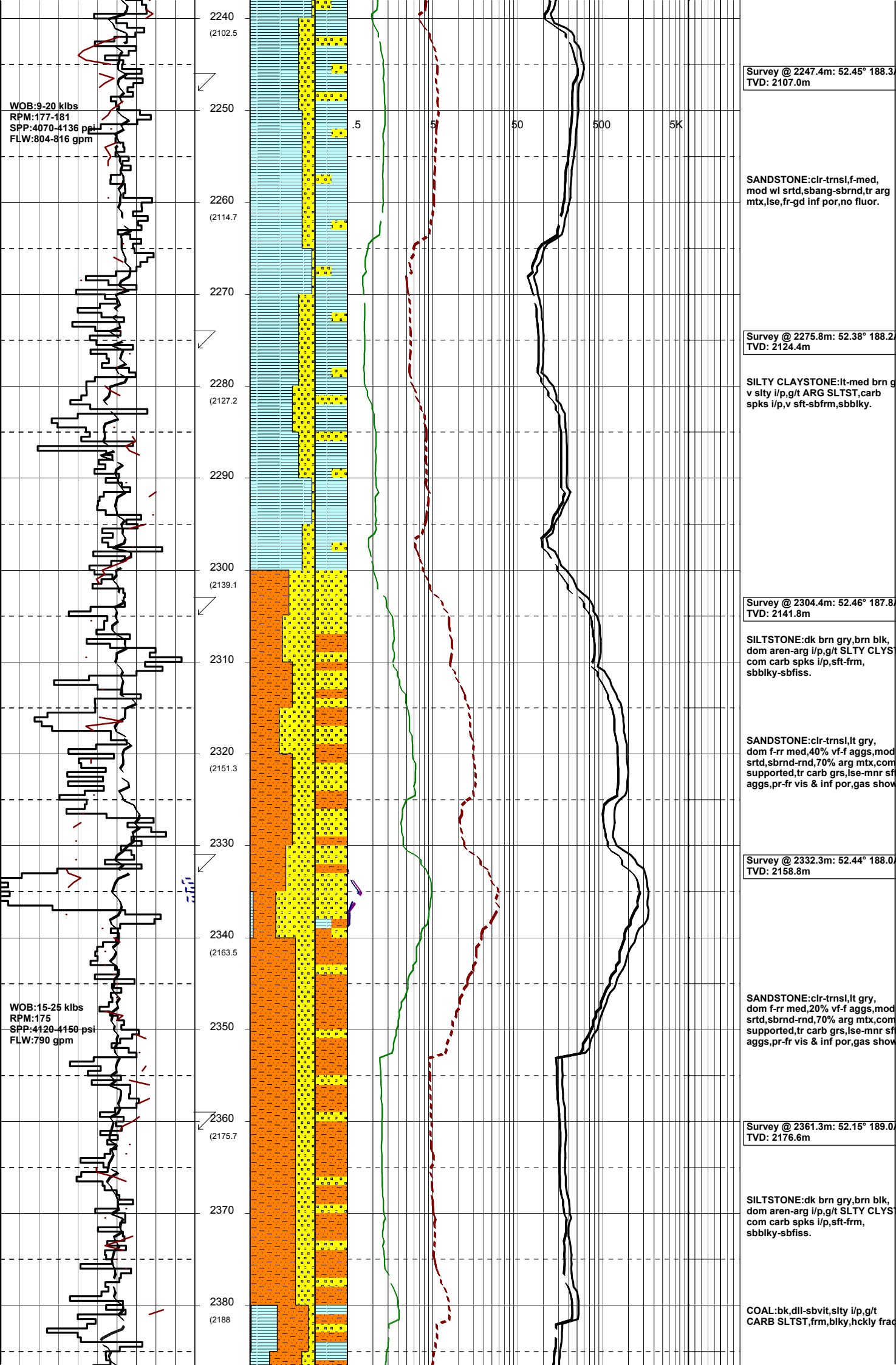
Survey @ 2189.2m: 51.58° 190.0°  
TVD: 2071.4m

SANDSTONE: clr-trnsl, f-med,  
mod wl srted, sbrng-sbrnd, tr arg  
mtx, lse, fr-gd inf por, no fluor.

Survey @ 2218.6m: 52.38° 189.1°  
TVD: 2089.5m

CLAYSTONE: med-dk gry, rr brn  
gry, rr slightly slty, tr carb spks,  
v sft-frm, sbbkly.

SILTY CLAYSTONE: lt-med brn g  
v slty i/p, g/t ARG SLTST, carb  
spks i/p, v sft-sbrfm, sbbkly.



Survey @ 2247.4m: 52.45° 188.3°  
TVD: 2107.0m

SANDSTONE:clr-trnsl,f-med,  
mod wl srtd,sbang-sbrnd,tr arg  
mtx,lse,fr-gd inf por,no fluor.

Survey @ 2275.8m: 52.38° 188.2°  
TVD: 2124.4m

SILTY CLAYSTONE:lt-med brn g  
v slty i/p,g/t ARG SLTST,carb  
spks i/p,v sft-sbfrm,sbbkly.

Survey @ 2304.4m: 52.46° 187.8°  
TVD: 2141.8m

SILTSTONE:dk brn gry,brn blk,  
dom aren-arg i/p,g/t SLTY CLYS  
com carb spks i/p,sft-frm,  
sbbkly-sbfiss.

SANDSTONE:clr-trnsl,lt gry,  
dom f-rr med,40% vf-f aggs,mod  
srtd,sbrnd-rnd,70% arg mtx,com  
supported,tr carb grs,lse-mnr sft  
aggs,pr-fr vis & inf por,gas show

Survey @ 2332.3m: 52.44° 188.0°  
TVD: 2158.8m

SANDSTONE:clr-trnsl,lt gry,  
dom f-rr med,20% vf-f aggs,mod  
srtd,sbrnd-rnd,70% arg mtx,com  
supported,tr carb grs,lse-mnr sft  
aggs,pr-fr vis & inf por,gas show

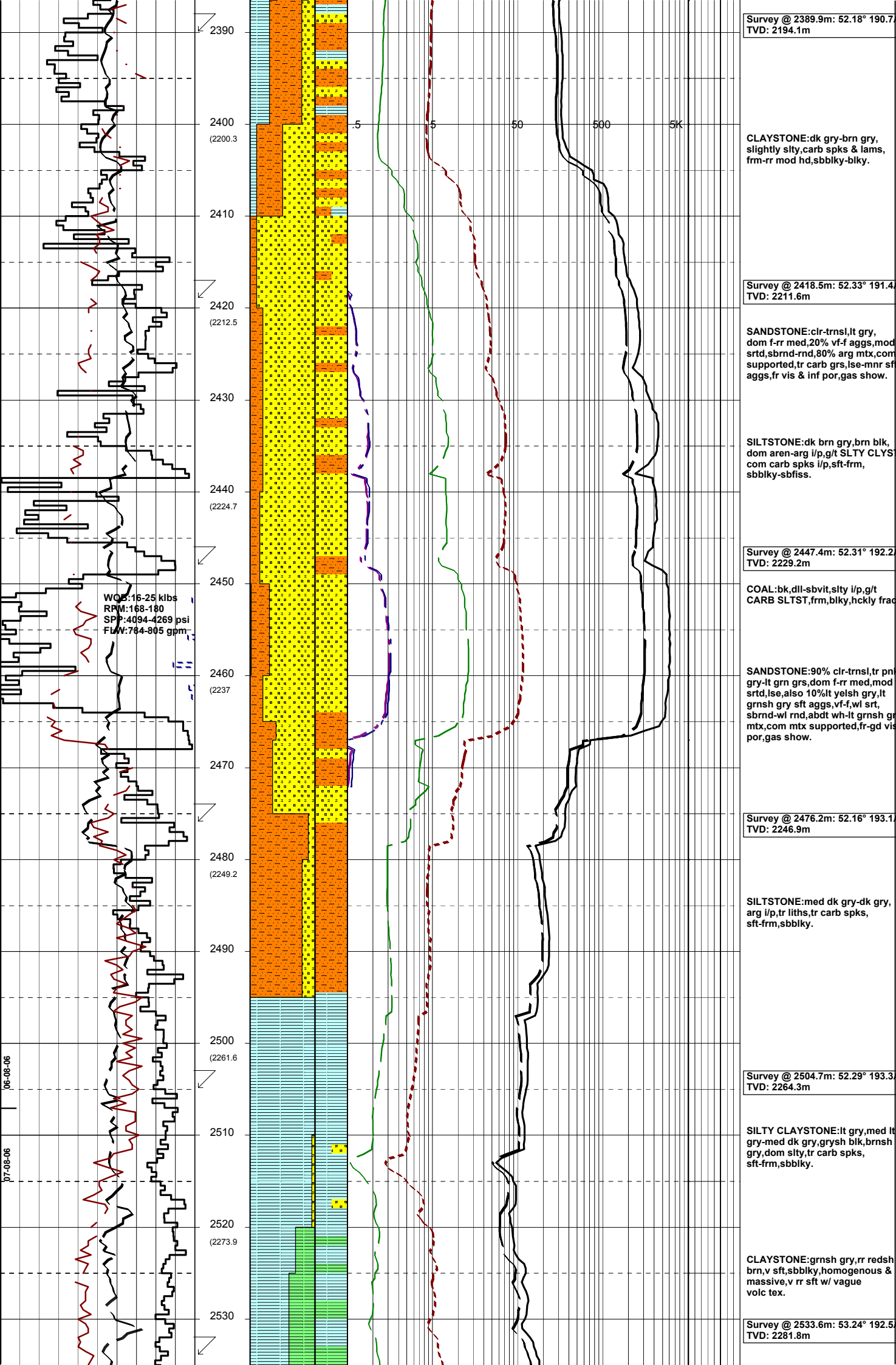
Survey @ 2361.3m: 52.15° 189.0°  
TVD: 2176.6m

SILTSTONE:dk brn gry,brn blk,  
dom aren-arg i/p,g/t SLTY CLYS  
com carb spks i/p,sft-frm,  
sbbkly-sbfiss.

COAL:bk,dll-sbvlt,slty i/p,g/t  
CARB SLTST,frm,blkly,hckly frac

WOB:9-20 klbs  
RPM:177-181  
SPP:4070-4136 psi  
FLW:804-816 gpm

WOB:15-25 klbs  
RPM:175  
SPP:4120-4150 psi  
FLW:790 gpm

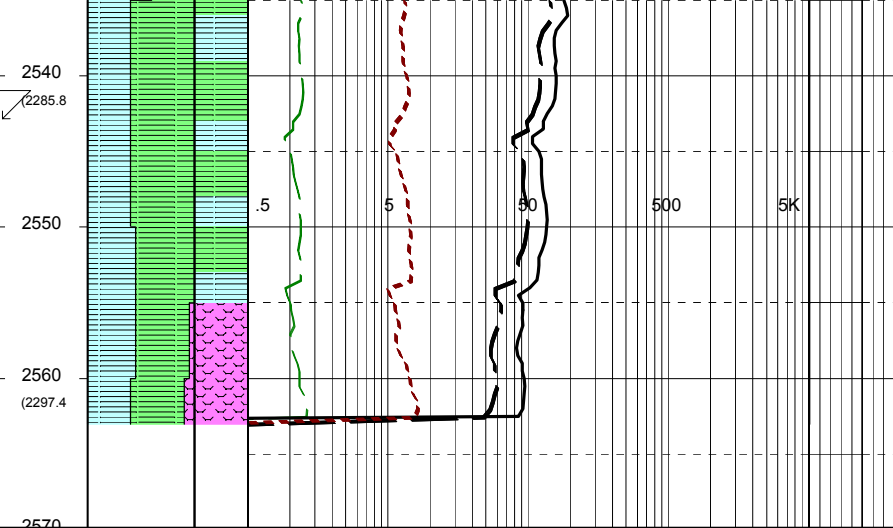
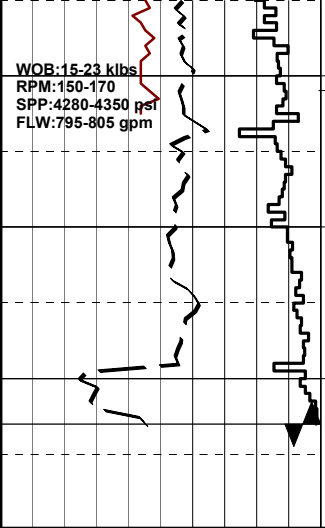


2390  
 2400 (2200.3)  
 2410  
 2420 (2212.5)  
 2430  
 2440 (2224.7)  
 2450  
 2460 (2237)  
 2470  
 2480 (2249.2)  
 2490  
 2500 (2261.6)  
 2510  
 2520 (2273.9)  
 2530

WOB: 16-25 klbs  
 RPM: 168-180  
 SPP: 4094-4269 psi  
 FLW: 784-805 gpm

Survey @ 2389.9m: 52.18° 190.7°  
 TVD: 2194.1m  
  
 CLAYSTONE: dk gry-brn gry, slightly stly, carb spks & lams, frm-rr mod hd, sbbly-blky.  
  
 Survey @ 2418.5m: 52.33° 191.4°  
 TVD: 2211.6m  
  
 SANDSTONE: clr-trns, lt gry, dom f-rr med, 20% vf-f aggs, mod srt, sbrnd-rnd, 80% arg mtx, com supported, tr carb grs, lse-mnr sft aggs, fr vis & inf por, gas show.  
  
 SILTSTONE: dk brn gry, brn blk, dom aren-arg i/p, g/t SLTY CLYST com carb spks i/p, sft-frm, sbbly-sbflss.  
  
 Survey @ 2447.4m: 52.31° 192.2°  
 TVD: 2229.2m  
  
 COAL: bk, dll-sbvit, stly i/p, g/t CARB SLTST, frm, blk, hckly frac  
  
 SANDSTONE: 90% clr-trns, tr pn gry-lt grn grs, dom f-rr med, mod srt, lse, also 10% lt yelsh gry, lt grnsh gry sft aggs, vf-f, wl srt, sbrnd-wl rnd, abdt wh-lt grnsh g mtx, com mtx supported, fr-gd vis por, gas show.  
  
 Survey @ 2476.2m: 52.16° 193.1°  
 TVD: 2246.9m  
  
 SILTSTONE: med dk gry-dk gry, arg i/p, tr liths, tr carb spks, sft-frm, sbbly.  
  
 Survey @ 2504.7m: 52.29° 193.3°  
 TVD: 2264.3m  
  
 SILTY CLAYSTONE: lt gry, med lt gry-med dk gry, grysh blk, brnsh gry, dom stly, tr carb spks, sft-frm, sbbly.  
  
 CLAYSTONE: grnsh gry, rr redsh brn, v sft, sbbly, homogenous & massive, v rr sft w/ vague volc tex.  
  
 Survey @ 2533.6m: 53.24° 192.5°  
 TVD: 2281.8m

06-08-06  
 07-08-06



Survey @ 2542.8m: 53.31° 192.0  
 TVD: 2287.3m

CLAYSTONE: lt-dk grnsh gry,  
 occ off wh-crm, rr redsh brn,  
 tr qtz grs, tr vague remnant  
 volc crystal structure i/p,  
 v sft, deformable i/p, sbbkly.

VOLCANICS: dk grnsh gry, vf-  
 microxln, holoxln, com qtz & grn  
 pyroxene, com wethrd to clay  
 w/ only remnant crystal structur  
 occ silicified, frm-hd.

POOH @ 2563m.(TD)

